

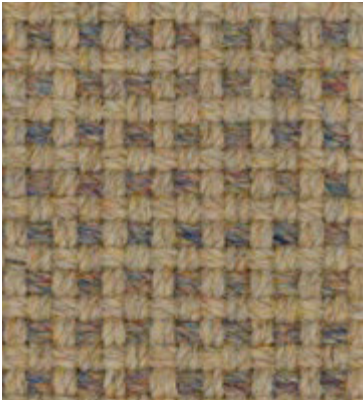
at work*
with
Camira

ReSKU 2.0

“A blast from the past, ReSKU 2.0 is a recreation of our iconic recycled wool fabric, ReSKU, which launched in 1998 and was made from old army jumpers. Reimagined for 2024 to celebrate our 50th anniversary, ReSKU 2.0 is the latest innovation to emerge from our advanced textile reprocessing technology, iinouiiio. An intelligent blend of recycled wool, generated from our own manufacturing waste, and harvested flax, the fabric has a naturally homespun aesthetic in 24 striking colourways. The result is pioneering future forward fabric which is recycled, renewable and circular.”



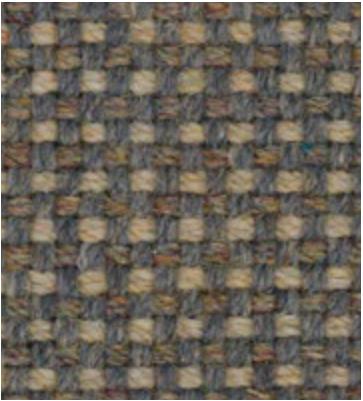
ReSKU 2.0



Reawaken
RES01



Reborn
RES02



Recraft
RES03



Repeat
RES04



Rebuild
RES05



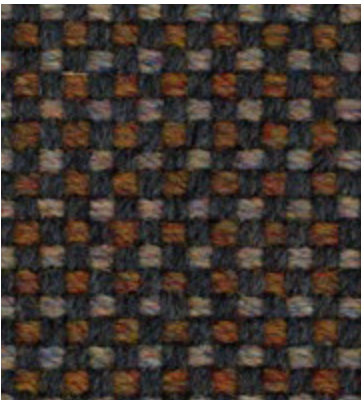
Return
RES06



Recapture
RES07



Retrieve
RES08



Regain
RES09



Recycle
RES10



Rebound
RES11

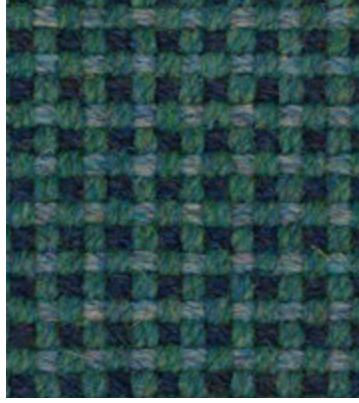


Reinvent
RES12

ReSKU 2.0



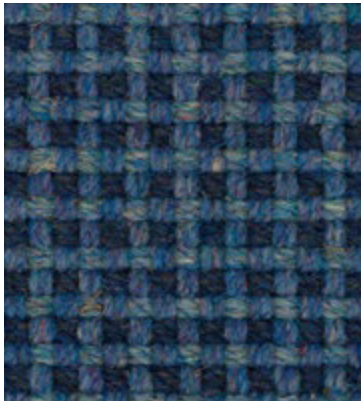
Remake
RES13



Rework
RES14



Recover
RES15



Rewind
RES16



Rescind
RES17



Resource
RES18



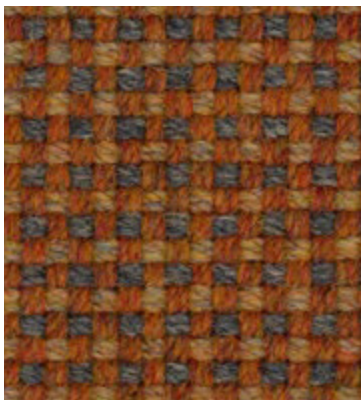
Recreate
RES19



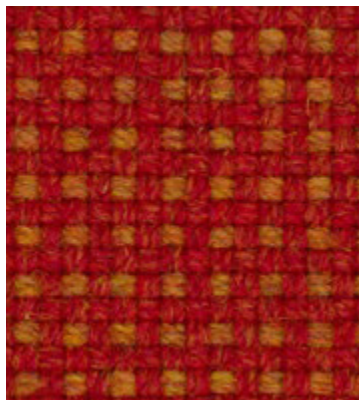
Redeem
RES20



Reimagine
RES21



Regenerate
RES22



Reshape
RES23



Revamp
RES24

ReSKU 2.0



Task seating



Soft seating



Panels



Curtains



Cigarette & Match



Medium Hazard



IMO FTP Code (Part 8)



Acoustic



Year guarantee

Technical information

UK

Composition
66% Recycled Wool, 21% Flax,
13% Recycled Polyamide

Environment
Certified to the EU Ecolabel
Certified to Indoor Advantage™ Gold

Width
140 cm minimum

Weight
600 g/m² ±5% (840 g/lin.m ±5%)

Abrasion Resistance
Heavy duty / 10 year guarantee.
Independently certified to ≥50,000
Martindale cycles

Flammability
AS1530.3
ISO5660
AS3837
Note: Flammability performance is dependent on components used. Our certificates show what substrates have been used in our tests. For composite tests customers must ensure their complete furniture meets the necessary standards.

Light Fastness
4-6 (ISO 105 - B02)

Fastness to Rubbing
Wet: 3, Dry: 4 (ISO 105 - X12)

Acoustic Properties
Acoustically transparent. Acoustic graphs available upon request

Cleaning
Vacuum regularly. Wipe with a damp cloth using a proprietary upholstery shampoo/ soap. For deeper cleaning use steam or professionally dry clean. Full details can be found in our cleaning and disinfection guide.

D

Zusammensetzung
66% recycelte Schurwolle, 21% Flachs,
13% recyceltes Polyamid

Umweltfreundlich
Nach Zertifikat EU Ecolabel
Nach Zertifikat Indoor Advantage™ Gold

Breite
140 cm nutzbare Breite

Gewicht
600 g/m² ±5% (840 g/ld.m ±5%)

Scheuerfestigkeit
Schwerer Objekteinsatz / 10 Jahre
Garantie. Extern zertifiziert mit ≥50,000
Scheuertouren Martindale

Feuersicherung
AS1530.3
ISO5660
AS3837
Bemerkung: Die Schwerentflammbarkeit hängt von den verwendeten Komponenten ab. Unsere Zertifikate zeigen auf, welche Substrate bei den Tests verwendet wurden. Bei Verbundtests muss sichergestellt sein, daß das komplette Möbel den entsprechenden Standards entspricht.

Lichtechtheit
4-6 (ISO 105 - B02)

Reibechtheit
Nass: 3, Trocken: 4 (ISO 105 - X12)

Akustische Eigenschaften
Akustisch durchlässig. Akustische
Messwerte auf Anfrage

Reinigung
Regelmäßig absaugen. Mit einem feuchten
Tuch abwischen oder mit einem geeigneten
Polstershampoo behandeln. Für eine
Grundreinigung bitte Dampf oder
professionelle Trockenreinigung verwenden.
Weitere Informationen finden Sie in
unserem Leitfaden zur Reinigung und
Pflege.

F

Composition
66% Laine Recyclées, 21% Lin,
13% Polyamide Recyclé

Écologique
Avec le certificat EU Ecolabel
Certifié à Indoor Advantage™ Gold

Largeur
140 cm minimum

Poids
600 g/m² ±5% (840 g/m.l ±5%)

Résistance à l'abrasion
Usage intense / garantie 10 ans. Certificat
indépendant ≥50,000 cycles Martindale

Flammabilité
AS1530.3
ISO5660
AS3837
Notez: La performance de flammabilité dépend des composantes utilisées. Nos certificats indiquent les substrats utilisés dans nos tests. Pour les tests composites, les clients doivent s'assurer que leurs meubles complets satisfont aux normes nécessaires.

Solidité à la lumière
4-6 (ISO 105 - B02)

Solidité au Frottement
Mouillé: 3, Sec: 4 (ISO 105 - X12)

Propriétés Acoustiques
Acoustiquement transparent. Graphiques
acoustiques disponibles sur demande

Nettoyage
Passez l'aspirateur régulièrement. Essayez
avec un chiffon humide en utilisant un
shampooing/savon pour tissus d'ameublement
exclusif. Pour un nettoyage en profondeur,
utilisez la vapeur ou un nettoyage à sec
professionnel. Vous trouverez tous les
détails dans notre guide de nettoyage et de
désinfection.

ES

Composición
66% Lana Reciclada, 21% Lino,
13% Poliamida Reciclada

Ambiental
Certificado con EU Ecolabel
Certificado de Indoor Advantage™ Gold

Ancho
140 cm mínimo

Peso
600 g/m² ±5% (840 g/lin.m ±5%)

Resistencia a la abrasión
Garantía de 10 años con uso intenso
independientemente del certificado de
≥50,000 Ciclos Martindale

Inflamabilidad
AS1530.3
ISO5660
AS3837
Nota: El rendimiento de la inflamabilidad depende de los componentes usados. Nuestros certificados muestran qué substratos se han usado en nuestros tests. Para tests compuestos nuestros clientes deben asegurar si sus muebles cumplen la normativa al uso.

Solidez a la luz
4-6 (ISO 105 - B02)

Solidez al rozamiento
Húmedo: 3, Seco: 4 (ISO 105 - X12)

Acústico Propiedades
Acústicamente transparente. Gráficos
disponibles bajo petición

Limpeza
Uso aspirador regularmente. Limpiar con un
trapo usando jabón y agua o producto
limpieza para tapicerías. Para una limpieza
más profunda usen vapor o limpieza en
seco profesional. Los detalles completos
se encuentran en nuestra guía de limpieza
y desinfección.



Textile to Textile
Recycled Wool



Camira fabrics are
brought to Australasia
by Textilia

camira

at work*
with
Camira

AUSTRALIA
telephone: 1800 173209
web: atworkwithcamira.com
email: sales@atworkwithcamira.com
*at work is a brand of Textilia

at work*
with
Camira

NEW ZEALAND
telephone: +64 9 3023182
web: textilia.co.nz
email: info@textilia.co.nz
*at work is a brand of Textilia