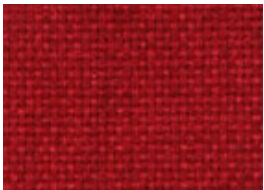




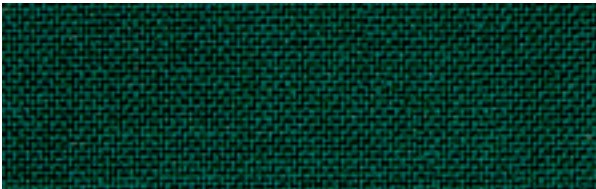
Gallery



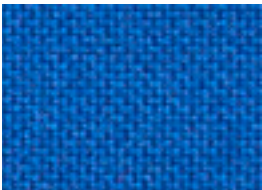
Poppy



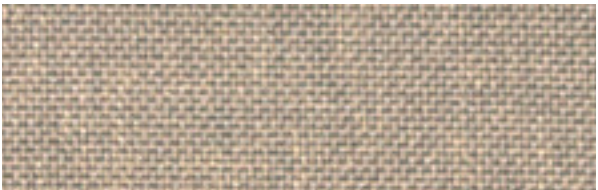
Claret



Hunter



Capri



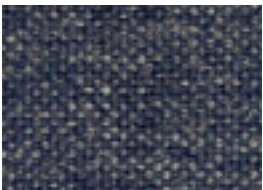
Gunsmoke



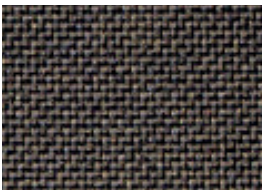
Riviera



Navy



Stonewash



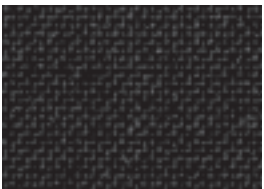
Storm



Venus



Nebula



Black

Quantum

Width	160cm
Composition	100% Polypropylene
Roll size	50-55m approx
Weight	440gms per lineal metre
Use	Upholstery, Screen
Abrasion	40,000 + Martindale
Flammability	AS1530.3, ISO5660, AS3837
Qualities	Anti Static Non allergenic Meets ISO9001 & ISO14001 environmental Inherently mildew/rot and moth proof Resistant to moisture, stain and soiling

Colour Variations: All textiles are subject to some colour variation.
Fabric supplied to customer order will be within commercial tolerance.

CTA Performance Rating: Tests conducted by independent testing laboratories indicate that QUANTUM met or exceeded the performance guidelines for Screen and Heavy Duty Commercial Fabric Use as determined by the CTA (Commercial Textile Association of Australia and New Zealand).

Fabric Care: Do not remove any part for separate cleaning. Protect from direct sunlight. Vacuum regularly using low suction. Rotate reversible cushions regularly. Professional cleaning recommended.

*Tel: +64 9 368 5768 / Fax: +64 9 368 5769 / Email: sales@textilia.co.nz / Web: textilia.co.nz / *at work is a brand of Textilia*



Commercial Textile Association
of Australia & New Zealand Limited.



Commercial Textile Association
Performance Rating.



Commercial Textile Association
Performance Rating.