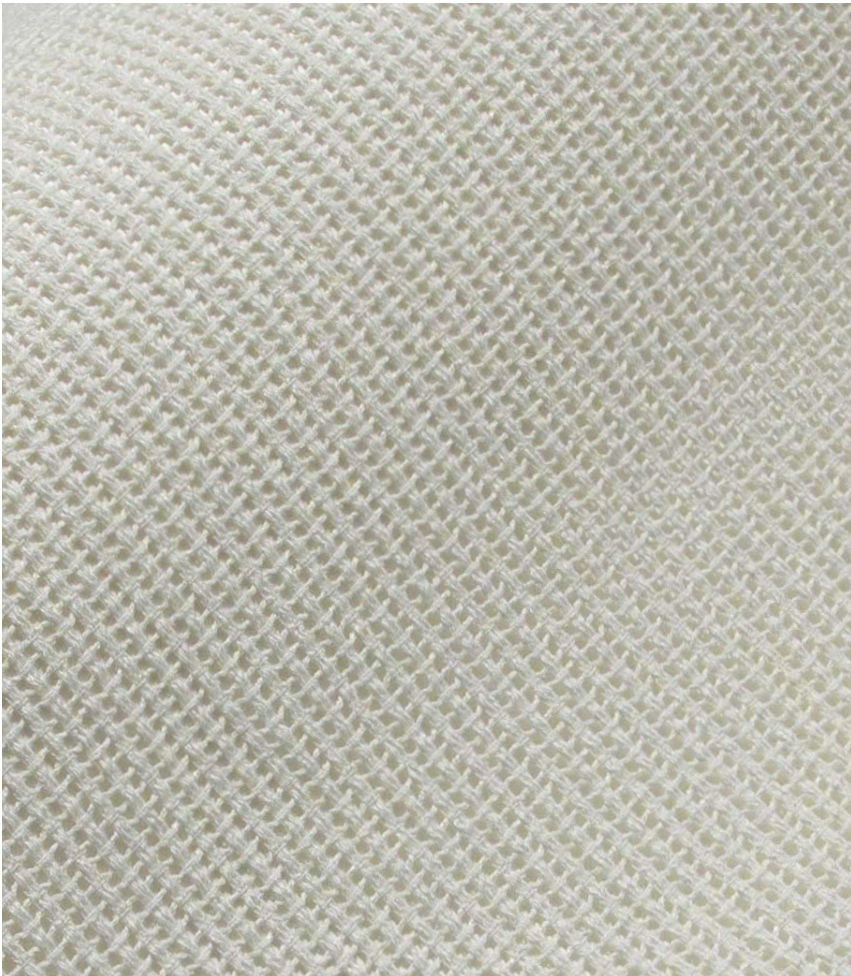




Lund Mist



Lund Lily



Lund Pond



Lund Feather

Lund

Use	Drapery
Composition	100% Polyester
Width	285 cm / Continuous
Roll size	40m approx.
Weight	785g per lineal metre
Light Fastness	6
Flammability	AS1530.2

Colour Variations: All textiles are subject to some colour variation.
Fabric supplied to customer order will be within commercial tolerance.

CTA Performance Rating: Tests conducted by independent testing laboratories indicate that LUND met or exceeded the performance guidelines for Healthcare Fabric use and Heavy Duty Commercial Use as determined by the CTA (Commercial Textile Association of Australia and New Zealand).

Fabric Care: Protect from direct sunlight. If dust is allowed to accumulate in curtains it will shorten the life span. Regular vacuuming with the appropriate attachment will overcome this. Warm handwash. Do not bleach. Do not rub or wring. Drip dry in the shade. Warm iron. Dry cleanable. Curtains should be lined when subjected to strong sunshine. Lining improves the appearance and ensures longer life of the curtains.

AUSTRALIA
telephone: 1800 173 209
web: atworkwithcamira.com
email: sales@atworkwithcamira.com
*at work is a brand of Textilia

NEW ZEALAND
telephone: +64 9 302 3182
web: textilia.co.nz
email: info@textilia.co.nz



Commercial Textile Association
of Australia & New Zealand Limited.