



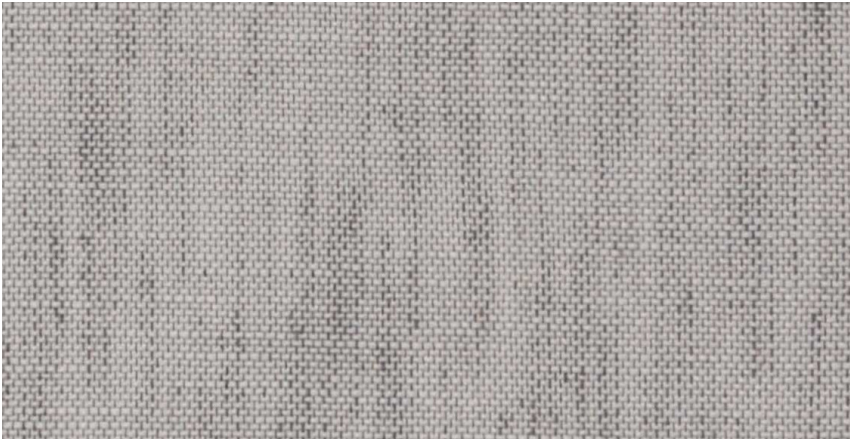
Chambray Cloud



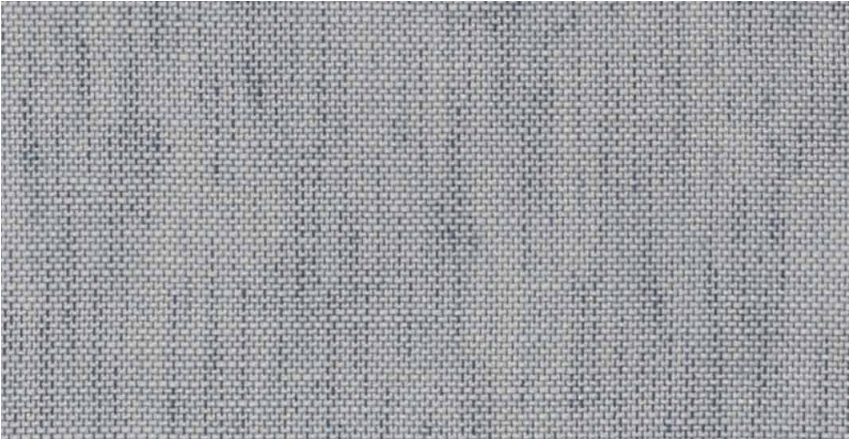
Chambray Driftwood



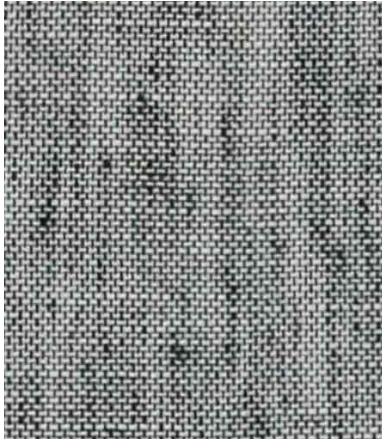
Chambray Surf



Chambray Pebble



Chambray Sky



Chambray Dapple

# Chambray

Use	Drapery
Composition	100% Polyester
Width	300 cm / Continuous
Roll size	35m approx.
Weight	699g per lineal metre
Light Fastness	5
Flammability	AS1530.2

**Colour Variations:** All textiles are subject to some colour variation.  
Fabric supplied to customer order will be within commercial tolerance.

**CTA Performance Rating:** Tests conducted by independent testing laboratories indicate that CHAMBRA Y met or exceeded the performance guidelines for Healthcare Fabric use and Heavy Duty Commercial Use as determined by the CTA (Commercial Textile Association of Australia and New Zealand).

**Fabric Care:** Protect from direct sunlight. If dust is allowed to accumulate in curtains it will shorten the life span. Regular vacuuming with the appropriate attachment will overcome this. Warm handwash. Do not bleach. Do not rub or wring. Drip dry in the shade. Warm iron. Dry cleanable. Curtains should be lined when subjected to strong sunshine. Lining improves the appearance and ensures longer life of the curtains.

AUSTRALIA  
telephone: 1800 173 209  
web: [atworkwithcamira.com](http://atworkwithcamira.com)  
email: [sales@atworkwithcamira.com](mailto:sales@atworkwithcamira.com)  
\*at work is a brand of Textilia

NEW ZEALAND  
telephone: +64 9 302 3182  
web: [textilia.co.nz](http://textilia.co.nz)  
email: [info@textilia.co.nz](mailto:info@textilia.co.nz)



Commercial Textile Association  
of Australia & New Zealand Limited.