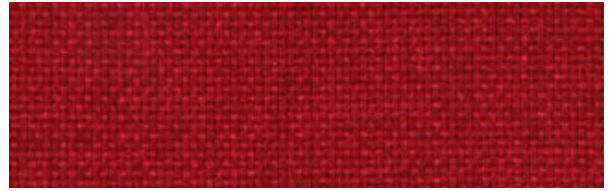
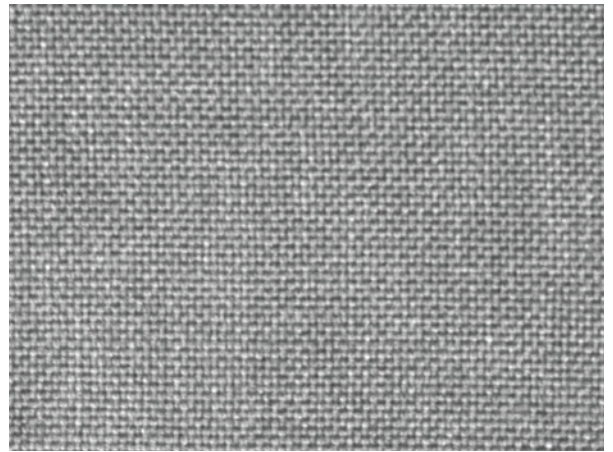




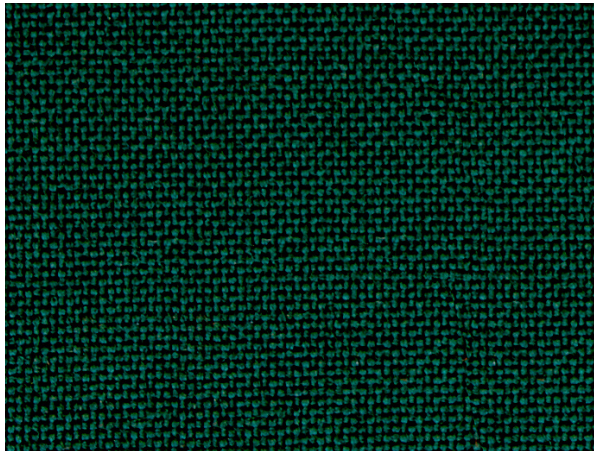
Gallery



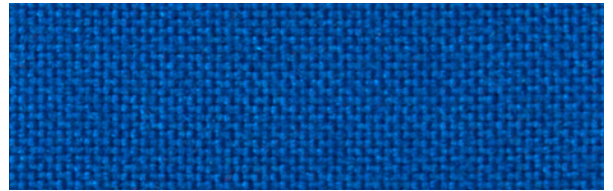
Poppy



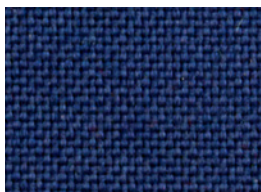
Gunsmoke



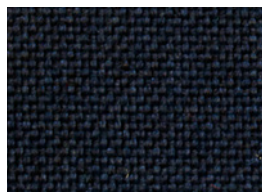
Hunter



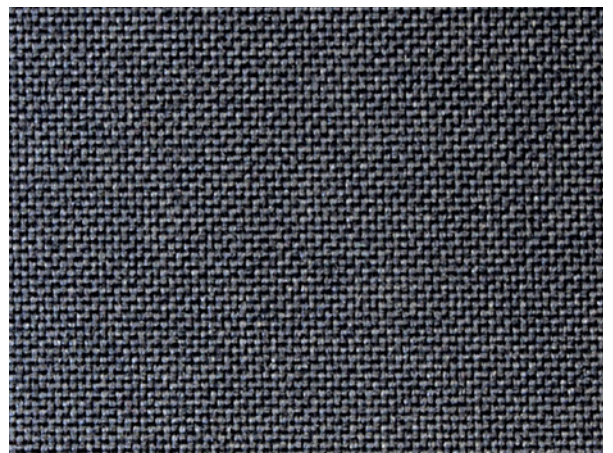
Capri



Riviera



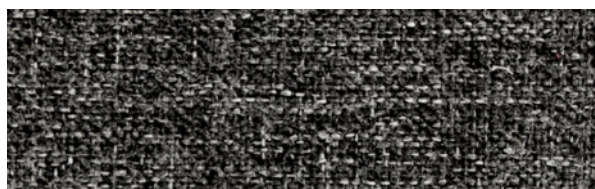
Navy



Storm



Venus



Nebula



Black

Quantum

| | |
|--------------|---|
| Width | 160cm |
| Composition | 100% Polypropylene |
| Roll size | 50-55m approx |
| Weight | 440gms per lineal metre |
| Use | Upholstery, Screen |
| Abrasion | 40,000 + Martindale |
| Flammability | AS1530.3, ISO5660, AS3837 |
| Qualities | Anti Static Non allergenic Meets ISO9001 & ISO14001 environmental Inherently mildew/rot and moth proof Resistant to moisture, stain and soiling |

Colour Variations: All textiles are subject to some colour variation.
Fabric supplied to customer order will be within commercial tolerance.

CTA Performance Rating: Tests conducted by independent testing laboratories indicate that QUANTUM met or exceeded the performance guidelines for Screen and Heavy Duty Commercial Fabric Use as determined by the CTA (Commercial Textile Association of Australia and New Zealand).

Fabric Care: Do not remove any part for separate cleaning. Protect from direct sunlight. Vacuum regularly using low suction. Rotate reversible cushions regularly. Professional cleaning recommended.

*Tel: +64 9 368 5768 / Fax: +64 9 368 5769 / Email: sales@textilia.co.nz / Web: textilia.co.nz / *at work is a brand of Textilia*



Commercial Textile Association
of Australia & New Zealand Limited.



Commercial Textile Association
Performance Rating.



Commercial Textile Association
Performance Rating.