

at work*
with
Camira

—

Kork

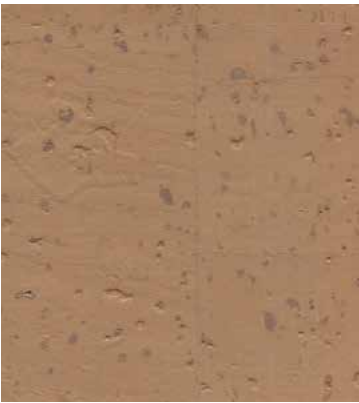
A modern take on a rustic material, Kork blends natural beauty with a stylised aesthetic. With its raw composition softened by its sleek tactility, the organic pattern inherent to the bark is showcased through its delicate colouration, making it the ideal material to bring a hint of biophilia to any interior. Crafted from FSC responsibly sourced cork, this innovative panel material truly encapsulates designing with nature.

Photographic fabric scans are not colour accurate. Always request actual fabric samples before ordering.

Kork



Aroma
WIN01



Notes
WIN02



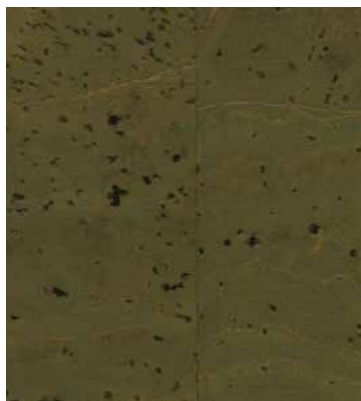
Crisp
WIN03



Smokey
WIN04



Opulent
WIN05



Rich
WIN06



Tannin
WIN07

Technical information

UK

Composition

Surface: 93% Cork, 7% PU
Substrate: 55% PU, 29.5% Polyester, 15.5% Cotton

Width

135 cm minimum

Weight

450g/m² ±10% (621g/lin.m ±10%)

Flammability

AS3837
ISO5660
EEN 13501-1 Adhered Class B, s1, d0
Note: Flammability performance is dependent on components used.

Light Fastness

WIN02, WIN05, WIN06, WIN07: 5 (ISO 105 - B02)
WIN01, WIN03, WIN04: 4 (ISO 105 - B02)

Fastness to Rubbing

Wet: 4, Dry: 4 (ISO 105 - X12)

Cleaning

Wipe with a damp cloth. For full details, see the cleaning guide.

Please note that seam performance is dependent on seam construction and needle and thread type. We recommend that appropriate sewing advice be taken. This product should be adhered using water-based glues. Using any other glues will void the product guarantee.

Batch to batch variations in shade may occur within commercial tolerances. We reserve the right to alter technical specifications without notice. The Unregistered Design Rights and the Copyright in all designs are the exclusive property of Camira Fabrics Limited.

Camira fabrics are
brought to Australasia
by Textilia



Commercial Textile Association
of Australia & New Zealand Limited.

at work*
with
Camira

at work*
with
Camira

camira



Commercial Textile Association
Performance Rating.

AUSTRALIA
telephone: 1800 173209
web: atworkwithcamira.com
email: sales@atworkwithcamira.com
*at work is a brand of Textilia

NEW ZEALAND
telephone: +64 9 3685768
web: textilia.co.nz
email: info@textilia.co.nz
*at work is a brand of Textilia