

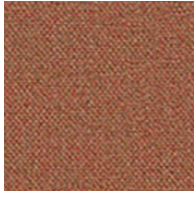
at work\*  
with  
Camira

---

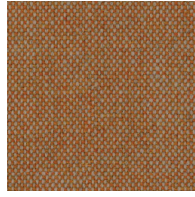
## Main Line Flax

“Mainline Flax builds on our industry leading bast fibre expertise to create a new inherently flame retardant fabric from sustainable sources. A symbol of purity, wild flax has been used in textiles for thousands of years thanks to its strong, long and smooth fibres found inside the stem of the plant. The fibre is spun into a 70-30 wool flax blend, then dyed to create beautiful mixture yarns which are woven into interesting solids and cross-colours inspired by the rich tones of rare jewels.”

# Main Line Flax



Alperton  
MLF43



Lambeth  
MLF08



Leyton  
MLF13



Balham  
MLF44



Barking  
MLF45



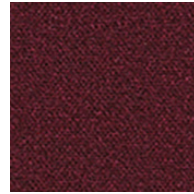
Aldgate  
MLF01



Kilburn  
MLF06



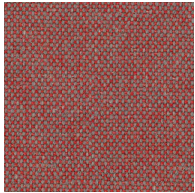
Parsons  
MLF14



Blackwall  
MLF46



Northfields  
MLF40



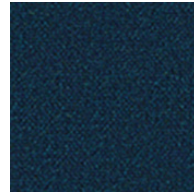
Barbican  
MLF03



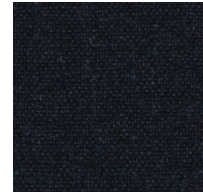
Brixton  
MLF47



Chigwell  
MLF48



Embankment  
MLF50



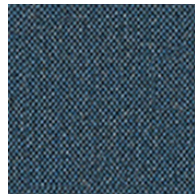
Tower  
MLF36



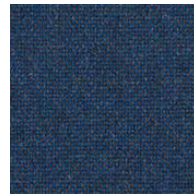
Waterloo  
MLF21



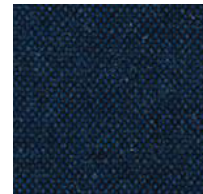
Epping  
MLF51



Clapham  
MLF49



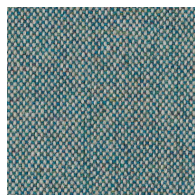
Brompton  
MLF35



Victoria  
MLF19



Westminster  
MLF22



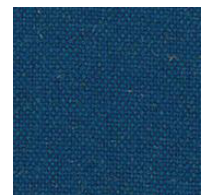
Bayswater  
MLF24



Stanmore  
MLF37



Pimlico  
MLF34



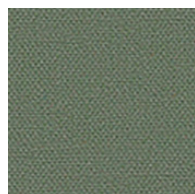
Holborn  
MLF05



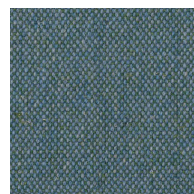
Newbury  
MLF10



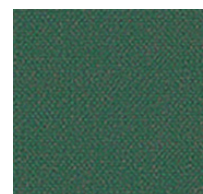
Monument  
MLF09



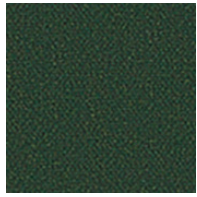
Greenwich  
MLF52



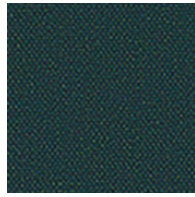
Bethnal  
MLF25



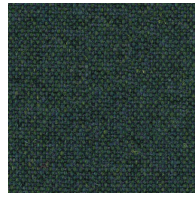
Harrow  
MLF54



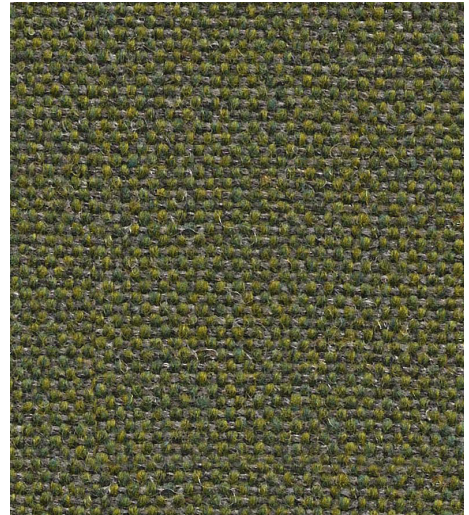
Hornchurch  
MLF55



Hampstead  
MLF53



Greenford  
MLF32



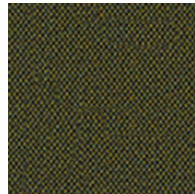
Moorgate  
MLF57



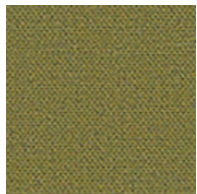
Tuffnell  
MLF18



Farringdon  
MLF29



Kentish  
MLF56



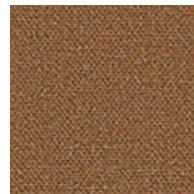
Woodford  
MLF67



Goldhawk  
MLF31



Tooting  
MLF17



Perivale  
MLF59



Stockwell  
MLF15



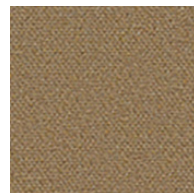
Kensington  
MLF07



Upminster  
MLF20



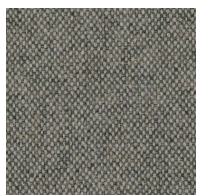
Morden  
MLF12



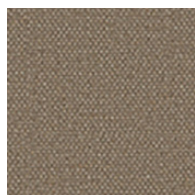
Pinner  
MLF60



Bank  
MLF23



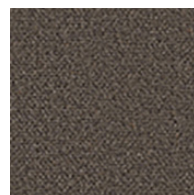
Archway  
MLF02



Redbridge  
MLF61



Camden  
MLF26



Richmond  
MLF62



Temple  
MLF16



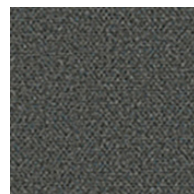
Shadwell  
MLF63



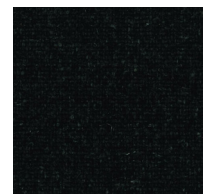
Stratford  
MLF64



Watford  
MLF65



Whitechapel  
MLF66



Edgware  
MLF28

# Main Line Flax



Task seating



Soft seating



Panels



Curtains



Cigarette & Match



Medium Hazard



IMO FTP Code (Part 8)



Environmental



Acoustic



Year guarantee

A beloved Camira textile, Main Line Flax is made from the best nature has to offer. A blend of pure wool and harvested flax creates this multi-tonal, inherently flame retardant fabric.



## Technical information

### UK

#### Composition

75% Virgin Wool , 25% Flax

#### Environment

Certified to the EU Ecolabel  
Certified to Indoor Advantage™ Gold  
Rapidly renewable and compostable  
Made from wool and plant fibre

#### Width

140 cm minimum

#### Weight

437g/m<sup>2</sup> ±5% (612g/lin.m ±5%)

#### Abrasion Resistance

Heavy duty / 10 year guarantee.  
Independently certified to ≥50,000  
Martindale cycles

#### Flammability

AS1530.3  
ISO5660  
AS3837

*Note: Flammability performance is dependent on components used. Our certificates show what substrates have been used in our tests. For composite tests customers must ensure their complete furniture meets the necessary standards.*

#### Light Fastness

4-5 (ISO 105 - B02)

#### Fastness to Rubbing

Wet: 3, Dry: 4 (ISO 105 - X12)

#### Acoustic Properties

Acoustically transparent. Acoustic graphs available upon request

#### Cleaning

Vacuum regularly. Wipe with a damp cloth using a proprietary upholstery shampoo/ soap. For deeper cleaning use steam or professionally dry clean. Full details can be found in our cleaning and disinfection guide.

### D

#### Zusammensetzung

75% Schurwolle , 25% Flachs

#### Umweltfreundlich

Nach Zertifikat EU Ecolabel  
Nach Zertifikat Indoor Advantage™ Gold  
Schnellerneuerbar und kompostierbar  
Mit Wolle und Pflanzfasern gefertigt

#### Breite

140 cm nutzbare Breite

#### Gewicht

437g/m<sup>2</sup> ±5% (612g/ldf.m ±5%)

#### Scheuerfestigkeit

Schwerer Objektsatz / 10 Jahre  
Garantie. Extern zertifiziert mit ≥50,000  
Scheuertouren Martindale

#### Feuersicherung

AS1530.3  
ISO5660  
AS3837

*Bemerkung: Die Schwerentflammbarkeit hängt von den verwendeten Komponenten ab. Unsere Zertifikate zeigen auf, welche Substrate bei den Tests verwendet wurden. Bei Verbundtests muss sichergestellt sein, daß das komplette Möbel den entsprechenden Standards entspricht.*

#### Lichtechtheit

4-5 (ISO 105 - B02)

#### Reibechtheit

Nass: 3, Trocken: 4 (ISO 105 - X12)

#### Akustische Eigenschaften

Akustisch durchlässig. Akustische Messwerte auf Anfrage

#### Reinigung

Regelmäßig absaugen. Mit einem feuchten Tuch abwischen oder mit einem geeigneten Polstershampoo behandeln. Für eine Grundreinigung bitte Dampf oder professionelle Trockenreinigung verwenden. Weitere Informationen finden Sie in unserem Leitfaden zur Reinigung und Pflege.

### F

#### Composition

75% Laine Vierge , 25% Lin

#### Écologique

Avec le certificat EU Ecolabel  
Certifié à Indoor Advantage™ Gold  
Rapidement renouvelable et compostable  
Fabriqué avec de la Laine et des fibres  
originaire de Tiges

#### Largeur

140 cm minimum

#### Poids

437g/m<sup>2</sup> ±5% (612g/m.l ±5%)

#### Résistance à l'abrasion

Usage intense / garantie 10 ans. Certificat  
indépendant ≥50,000 cycles Martindale

#### Flammabilité

AS1530.3  
ISO5660  
AS3837

*Notez: La performance de flammabilité dépend des composantes utilisées. Nos certificats indiquent les substrats utilisés dans nos tests. Pour les tests composites, les clients doivent s'assurer que leurs meubles complets satisfont aux normes nécessaires.*

#### Solidité à la lumière

4-5 (ISO 105 - B02)

#### Solidité au Frottement

Mouillé: 3, Sec: 4 (ISO 105 - X12)

#### Propriétés Acoustiques

Acoustiquement transparent. Graphiques acoustiques disponibles sur demande

#### Nettoyage

Passez l'aspirateur régulièrement. Essayez avec un chiffon humide en utilisant un shampoing/savon pour tissus d'ameublement exclusif. Pour un nettoyage en profondeur, utilisez la vapeur ou un nettoyage à sec professionnel. Vous trouverez tous les détails dans notre guide de nettoyage et de désinfection.

### ES

#### Composición

75% LanaVirgen , 25% Lino

#### Ambiental

Certificado de EU Ecolabel  
Certificado de Indoor Advantage™ Gold  
Rapidamente renovable y compostable  
Producido con lana y fibras naturales

#### Ancho

140 cm mínimo

#### Peso

437g/m<sup>2</sup> ±5% (612g/lin.m ±5%)

#### Resistencia a la abrasión

Garantía de 10 años con uso intenso  
independientemente del certificado de  
≥50,000 Ciclos Martindale

#### Inflamabilidad

AS1530.3  
ISO5660  
AS3837

*Nota: El rendimiento de la inflamabilidad depende de los componentes usados. Nuestros certificados muestran qué substratos se han usado en nuestros tests. Para tests compuestos nuestros clientes deben asegurar si sus muebles cumplen la normativa al uso.*

#### Solidez a la luz

4-5 (ISO 105 - B02)

#### Solidez al rozamiento

Húmedo: 3, Seco: 4 (ISO 105 - X12)

#### Acústico Propiedades

Acústicamente transparente. Gráficos disponibles bajo petición

#### Limpieza

Uso aspirador regularmente. Limpiar con un trapo usando jabón y agua o producto limpieza para tapicerías. Para una limpieza más profunda usen vapor o limpieza en seco profesional. Los detalles completos se encuentran en nuestra guía de limpieza y desinfección.

Camira fabrics are brought to Australasia by Textilia

at work\* with Camira

at work\* with Camira

camira

AUSTRALIA  
telephone: 1800 173209  
web: atworkwithcamira.com  
email: sales@atworkwithcamira.com  
\*at work is a brand of Textilia

NEW ZEALAND  
telephone: +64 9 3023182  
web: textilia.co.nz  
email: info@textilia.co.nz  
\*at work is a brand of Textilia