

Environmental product portfolios

camira

Contents

Upholstery

05	24/7 Flax
07	Aquarius
09	Blazer
11	Craggan Flax
13	Gravity
15	Era
19	Hebden
21	Hemp
23	Kyoto
25	Main Line Flax
27	Main Line Twist
29	Manhattan
31	Oceanic
33	Quest
35	Rivet
37	Silk
39	Sumi
41	Synergy

43	Urban
45	X2
47	Xtreme
49	Yoredale

Panel

53	Blazer Lite
55	Cara
57	Carlow
59	Era 170
61	Lucia
63	Synergy 170

24/7 Flax

24/7 Flax is an intuitive progression of our popular 24/7+ range. Continuing our pioneering work with bast fibres, 24/7 Flax incorporates a blend of wool and flax fibre to enhance the sustainability credentials of the fabric whilst maintaining the robust technical performance. Ideal for 'heavy duty' contract applications the fabric is inherently flame retardant to Medium Hazard level without post-treatments. The combination of flax yarn and crepe weave creates coloured highlights and intriguing texture.



Indoor Advantage Gold

The SCS Indoor Advantage certification program, developed by SCS Global Services (SCS), is an air quality certificate designed for interior building materials, furnishings and textiles. The indoor Advantage Gold standard aligns with both ANSI/BIFMA M7.1 and X7.1, and CA 01350. It qualifies for many building rating systems, including LEED v4, BREEAM, WELL Building, and Living Building Challenge.



LEED Credit Contributor

LEED v3

- MRc2.2 Sustainable purchasing - furniture (over 50% rapidly renewable material)

LEED v4

- Building product disclosure and optimization – sourcing of raw materials: Option 2 – Leadership extraction practices: recycled content and Low-Emitting Materials



Mindful Materials

mindful MATERIALS (mM) is a free platform with aggregated information on human health and environmental impacts for products from leading manufacturers, vetted by experts passionate about making it easier to make informed product choices.



Manufacturing

Manufacturing Location – Huddersfield, United Kingdom

- Facility systems – ISO 14001, ISO 9001, OHSAS 18001
- 0% Waste to landfill

[View & Order Samples](#)

Aquarius

Aquarius is a tried and tested, versatile crêpe weave fabric that is suitable for task chairs and soft seating. It's made from 100% natural wool, which is not only rapidly renewable but also fully bio-degradable. The colour palette offers a great balance of subdued organic shades and confident brights.



Indoor Advantage Gold

The SCS Indoor Advantage certification program, developed by SCS Global Services (SCS), is an air quality certificate designed for interior building materials, furnishings and textiles. The indoor Advantage Gold standard aligns with both ANSI/BIFMA M7.1 and X7.1, and CA 01350. It qualifies for many building rating systems, including LEED v4, BREEAM, WELL Building, and Living Building Challenge.



LEED Credit Contributor

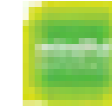
LEED v3

- MRc2.2 Sustainable purchasing - furniture (over 50% rapidly renewable material)
- MRc5 Regional Materials (depending on distance of project location)
- MRc6 Rapidly Renewable Materials (100% wool)

LEED v4

- Building product disclosure and optimization – sourcing of raw materials: Option 2 – Leadership extraction practices: Low-Emitting Materials

Information on contribution to other green building schemes is available.



Mindful Materials

mindful MATERIALS (mM) is a free platform with aggregated information on human health and environmental impacts for products from leading manufacturers, vetted by experts passionate about making it easier to make informed product choices.



Manufacturing

Manufacturing Location – Huddersfield, United Kingdom

- Facility systems – ISO 14001, ISO 9001, OHSAS 18001
- 0% Waste to landfill

[View & Order Samples](#)

Blazer

Blazer is a classic pure new wool upholstery fabric with a billiard cloth felted finish. It is made from premium New Zealand lambswool, where responsible farming provides the highest quality raw material which is soft, clean and bright, which is ideal for spinning, weaving and dyeing. The colour palette is an exciting mix of solids and mélanges across the full colour spectrum, creating a versatile fabric suitable for wide-ranging furniture applications.



Indoor Advantage Gold

The SCS Indoor Advantage certification program, developed by SCS Global Services (SCS), is an air quality certificate designed for interior building materials, furnishings and textiles. The indoor Advantage Gold standard aligns with both ANSI/BIFMA M7.1 and X7.1, and CA 01350. It qualifies for many building rating systems, including LEED v4, BREEAM, WELL Building, and Living Building Challenge.



LEED Credit Contributor

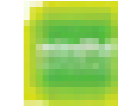
LEED v3

- MRc2.2 Sustainable purchasing - furniture (over 50% rapidly renewable material)
- MRc5 Regional Materials (depending on distance of project location)
- MRc6 Rapidly Renewable Materials (100% wool)

LEED v4

- Building product disclosure and optimization – sourcing of raw materials: Option 2 – Leadership extraction practices: Low-Emitting Materials

Information on contribution to other green building schemes is available.



Mindful Materials

mindful MATERIALS (mM) is a free platform with aggregated information on human health and environmental impacts for products from leading manufacturers, vetted by experts passionate about making it easier to make informed product choices.



Manufacturing

Manufacturing Location – Huddersfield, United Kingdom

- Facility systems – ISO 14001, ISO 9001, OHSAS 18001
- 0% Waste to landfill

[View & Order Samples](#)

Craggan Flax

Warmly welcoming, Craggan Flax is a textile to make any interior feel like home. Deeply textured and thickly woven, it effortlessly blends comfort with style to bring irresistible tactility and visual detail to both task and soft seating. Crafted from a blend of wool and flax, this sustainable fabric retains the raw appeal of its natural composition, whilst possessing the contemporary aesthetic of a chunky weave to provide an element of stylised texture.



Indoor Advantage Gold

The SCS Indoor Advantage certification program, developed by SCS Global Services (SCS), is an air quality certificate designed for interior building materials, furnishings and textiles. The indoor Advantage Gold standard aligns with both ANSI/BIFMA M7.1 and X7.1, and CA 01350. It qualifies for many building rating systems, including LEED v4, BREEAM, WELL Building, and Living Building Challenge.



LEED Credit Contributor

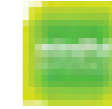
LEED v3

- MRc2.2 Sustainable purchasing - furniture (over 50% rapidly renewable material)
- MRc5 Regional Materials (depending on distance of project location)
- MRc6 Rapidly Renewable Materials (100% wool)

LEED v4

- Building product disclosure and optimization – sourcing of raw materials: Option 2 – Leadership extraction practices: Low-Emitting Materials

Information on contribution to other green building schemes is available.



Mindful Materials

mindful MATERIALS (mM) is a free platform with aggregated information on human health and environmental impacts for products from leading manufacturers, vetted by experts passionate about making it easier to make informed product choices.



Manufacturing

Manufacturing Location – Huddersfield, United Kingdom

- Facility systems – ISO 14001, ISO 9001, OHSAS 18001
- 0% Waste to landfill

[View & Order Samples](#)

Gravity

Gravity adds weight to seating through its attractive, geometric lightly textured patterning. The fabric contains our innovative “closed loop” recycled polyester, which is derived from our own yarn and selvedge waste, upcycled into yarn, then dobby woven and piece dyed. The end result is an intriguing, two-tone upholstery fabric with subtle surface interest, style and beautiful simplicity.



Indoor Advantage Gold

The SCS Indoor Advantage certification program, developed by SCS Global Services (SCS), is an air quality certificate designed for interior building materials, furnishings and textiles. The indoor Advantage Gold standard aligns with both ANSI/BIFMA M7.1 and X7.1, and CA 01350. It qualifies for many building rating systems, including LEED v4, BREEAM, WELL Building, and Living Building Challenge.



Oeko-Tex

The STANDARD 100 by OEKO-TEX® is a worldwide, independent testing and certification system for textile products. The scientific based certification process, which tests for substances which are harmful to human health, is based on rigorous test methods, test criteria and limit values, which in many cases go far beyond applicable national and international standards. Robust testing from all stages of production means that OEKO-TEX® contributes to high and effective consumer product safety.



LEED Credit Contributor

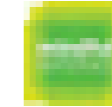
LEED v3

- MRc2.2 Sustainable purchasing - furniture ((20% post industrial recycled material)

LEED v4

- Building product disclosure and optimization – sourcing of raw materials: Option 2 – Leadership extraction practices: recycled content and Low-Emitting Materials

Information on contribution to other green building schemes is available.



Mindful Materials

mindful MATERIALS (mM) is a free platform with aggregated information on human health and environmental impacts for products from leading manufacturers, vetted by experts passionate about making it easier to make informed product choices.



Manufacturing

Manufacturing Location – Huddersfield, United Kingdom

- Facility systems – ISO 14001, ISO 9001, OHSAS 18001
- 0% Waste to landfill

[View & Order Samples](#)

Era

Era is a subtle, two tone polyester fabric containing stretch in both directions for ease of upholstery. The baby herringbone weave offers an understated contemporary texture while its colouring technique provides close up intrigue. The palette incorporates playful brights and sophisticated muted tones.



Indoor Advantage Gold

The SCS Indoor Advantage certification program, developed by SCS Global Services (SCS), is an air quality certificate designed for interior building materials, furnishings and textiles. The indoor Advantage Gold standard aligns with both ANSI/BIFMA M7.1 and X7.1, and CA 01350. It qualifies for many building rating systems, including LEED v4, BREEAM, WELL Building, and Living Building Challenge.



Oeko-Tex

The STANDARD 100 by OEKO-TEX® is a worldwide, independent testing and certification system for textile products. The scientific based certification process, which tests for substances which are harmful to human health, is based on rigorous test methods, test criteria and limit values, which in many cases go far beyond applicable national and international standards. Robust testing from all stages of production means that OEKO-TEX® contributes to high and effective consumer product safety.



LEED Credit Contributor

LEED v4

- Building product disclosure and optimization – sourcing of raw materials: Option 2 – Leadership extraction practices: Low-Emitting Materials

Information on contribution to other green building schemes is available.



Mindful Materials

mindful MATERIALS (mM) is a free platform with aggregated information on human health and environmental impacts for products from leading manufacturers, vetted by experts passionate about making it easier to make informed product choices.



Manufacturing

Manufacturing Location – Huddersfield, United Kingdom

- Facility systems – ISO 14001, ISO 9001, OHSAS 18001
- 0% Waste to landfill

[View & Order Samples](#)

Hemp

Expertly woven from a blend of wool and hemp, Hemp is a fabric of natural beauty. With a soft handle and inherent flame retardancy, this sustainable textile has a classic plain weave that perfectly showcases its natural composition and multi-tonal colouration.



Indoor Advantage Gold

The SCS Indoor Advantage certification program, developed by SCS Global Services (SCS), is an air quality certificate designed for interior building materials, furnishings and textiles. The indoor Advantage Gold standard aligns with both ANSI/BIFMA M7.1 and X7.1, and CA 01350. It qualifies for many building rating systems, including LEED v4, BREEAM, WELL Building, and Living Building Challenge.



EU Ecolabel Certified

The EU Ecolabel helps you identify products and services that have a reduced environmental impact throughout their life cycle, from the extraction of raw material through to production, use and disposal. Recognised throughout Europe, the EU Ecolabel is a voluntary label promoting environmental excellence which can be trusted.



LEED Credit Contributor

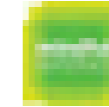
LEED v3

- MRc2.2 Sustainable purchasing - furniture (over 50% rapidly renewable material)
- MRc5 Regional Materials (depending on distance of project location)
- MRc6 Rapidly Renewable Materials (60% wool, 40% hemp)

LEED v4

- Building product disclosure and optimization – sourcing of raw materials: Option 2 – Leadership extraction practices: Low-Emitting Materials

Information on contribution to other green building schemes is available.



Mindful Materials

mindful MATERIALS (mM) is a free platform with aggregated information on human health and environmental impacts for products from leading manufacturers, vetted by experts passionate about making it easier to make informed product choices.



Manufacturing

Manufacturing Location – Huddersfield, United Kingdom

- Facility systems – ISO 14001, ISO 9001, OHSAS 18001
- 0% Waste to landfill

[View & Order Samples](#)

Kyoto

Taking its cue from traditional Japanese textiles, Kyoto echoes the sweeping uniformity of the artisan stitching and resist dyeing techniques seen in age-old apparel with its geo-organic pattern. The striated grid is woven using an innovative printed yarn which creates the fluid and fluctuating broken check, adding an extra design touch and complementing the relaxed aesthetic of the lightly textured fabric.

Designed to work in harmony with Sumi's colour offering, the fabric's deliberately restrained palette allows for simple coordination of the two to create serene interiors as graceful as the fabrics themselves.



Indoor Advantage Gold

The SCS Indoor Advantage certification program, developed by SCS Global Services (SCS), is an air quality certificate designed for interior building materials, furnishings and textiles. The indoor Advantage Gold standard aligns with both ANSI/BIFMA M7.1 and X7.1, and CA 01350. It qualifies for many building rating systems, including LEED v4, BREEAM, WELL Building, and Living Building Challenge.



The EU Ecolabel helps you identify products and services that have a reduced environmental impact throughout their life cycle, from the extraction of raw material through to production, use and disposal. Recognised throughout Europe, the EU Ecolabel is a voluntary label promoting environmental excellence which can be trusted.



LEED Credit Contributor

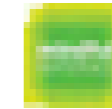
LEED v3

- MRc2.2 Sustainable purchasing - furniture (over 50% rapidly renewable material)
- MRc5 Regional Materials (depending on distance of project location)
- MRc6 Rapidly Renewable Materials (90% wool)

LEED v4

- Building product disclosure and optimization – sourcing of raw materials: Option 2 – Leadership extraction practices: Low-Emitting Materials

Information on contribution to other green building schemes is available.



Mindful Materials

mindful MATERIALS (mM) is a free platform with aggregated information on human health and environmental impacts for products from leading manufacturers, vetted by experts passionate about making it easier to make informed product choices.



Manufacturing

Manufacturing Location – Huddersfield, United Kingdom

- Facility systems – ISO 14001, ISO 9001, OHSAS 18001
- 0% Waste to landfill

[View & Order Samples](#)

Main Line Flax

Main Line Flax is the natural progression of our all-time favourite Main Line Plus fabric, building on our industry-leading bast fibre expertise to create a new inherently flame retardant fabric from sustainable sources. A symbol of purity, wild flax has been used in textiles for thousands of years thanks to its strong, long and smooth fibres found inside the stem of the plant. The fibre is spun into a 75-25 wool flax blend, then fibre-dyed to create beautiful mixture yarns which are woven into interesting solids and cross-colours inspired by the rich tones of rare jewels.



Indoor Advantage Gold

The SCS Indoor Advantage certification program, developed by SCS Global Services (SCS), is an air quality certificate designed for interior building materials, furnishings and textiles. The indoor Advantage Gold standard aligns with both ANSI/BIFMA M7.1 and X7.1, and CA 01350. It qualifies for many building rating systems, including LEED v4, BREEAM, WELL Building, and Living Building Challenge.



EU Ecolabel Certified

The EU Ecolabel helps you identify products and services that have a reduced environmental impact throughout their life cycle, from the extraction of raw material through to production, use and disposal. Recognised throughout Europe, the EU Ecolabel is a voluntary label promoting environmental excellence which can be trusted.



LEED Credit Contributor

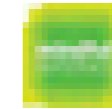
LEED v3

- MRc2.2 Sustainable purchasing - furniture (over 50% rapidly renewable material)
- MRc5 Regional Materials (depending on distance of project location)
- MRc6 Rapidly Renewable Materials (70% wool, 30% flax)

LEED v4

- Building product disclosure and optimization – sourcing of raw materials: Option 2 – Leadership extraction practices: Low-Emitting Materials

Information on contribution to other green building schemes is available.



Mindful Materials

mindful MATERIALS (mM) is a free platform with aggregated information on human health and environmental impacts for products from leading manufacturers, vetted by experts passionate about making it easier to make informed product choices.



Manufacturing

Manufacturing Location – Huddersfield, United Kingdom

- Facility systems – ISO 14001, ISO 9001, OHSAS 18001
- 0% Waste to landfill

[View & Order Samples](#)

Main Line Twist

Woven from a blend of wool and flax, Main Line Twist is a tweed effect textile with a beautiful, handwoven appearance. Multi-tonal yarns create a fabric with impossible-to-define colour detail, rich in warmth and texture.



Indoor Advantage Gold

The SCS Indoor Advantage certification program, developed by SCS Global Services (SCS), is an air quality certificate designed for interior building materials, furnishings and textiles. The indoor Advantage Gold standard aligns with both ANSI/BIFMA M7.1 and X7.1, and CA 01350. It qualifies for many building rating systems, including LEED v4, BREEAM, WELL Building, and Living Building Challenge.



EU Ecolabel Certified

The EU Ecolabel helps you identify products and services that have a reduced environmental impact throughout their life cycle, from the extraction of raw material through to production, use and disposal. Recognised throughout Europe, the EU Ecolabel is a voluntary label promoting environmental excellence which can be trusted.



LEED Credit Contributor

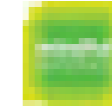
LEED v3

- MRc2.2 Sustainable purchasing - furniture (over 50% rapidly renewable material)
- MRc5 Regional Materials (depending on distance of project location)
- MRc6 Rapidly Renewable Materials (70% wool, 30% flax)

LEED v4

- Building product disclosure and optimization – sourcing of raw materials: Option 2 – Leadership extraction practices: Low-Emitting Materials

Information on contribution to other green building schemes is available.



Mindful Materials

mindful MATERIALS (mM) is a free platform with aggregated information on human health and environmental impacts for products from leading manufacturers, vetted by experts passionate about making it easier to make informed product choices.



Manufacturing

Manufacturing Location – Huddersfield, United Kingdom

- Facility systems – ISO 14001, ISO 9001, OHSAS 18001
- 0% Waste to landfill

[View & Order Samples](#)

Manhattan

Manhattan is a doobby weave fabric with a modern, geometric texture mimicking the architectural grid system within an urban landscape. Made from 100% recycled polyester, the fabric has in-built stretch for easy upholstery. The global colour palette follows the colour blocking and modular fashion trend.



Indoor Advantage Gold

The SCS Indoor Advantage certification program, developed by SCS Global Services (SCS), is an air quality certificate designed for interior building materials, furnishings and textiles. The indoor Advantage Gold standard aligns with both ANSI/BIFMA M7.1 and X7.1, and CA 01350. It qualifies for many building rating systems, including LEED v4, BREEAM, WELL Building, and Living Building Challenge.



EU Ecolabel Certified

The EU Ecolabel helps you identify products and services that have a reduced environmental impact throughout their life cycle, from the extraction of raw material through to production, use and disposal. Recognised throughout Europe, the EU Ecolabel is a voluntary label promoting environmental excellence which can be trusted.



LEED Credit Contributor

LEED v3

- MRc2.2 Sustainable purchasing - furniture (over 20% post-industrial recycled content)
- MRc4 Recycled Content (100% recycled polyester)
- MRc5 Regional Materials (depending on distance of project location)

LEED v4

- Option 2 – Leadership extraction practices: recycled content and Low-Emitting Materials

Information on contribution to other green building schemes is available.



Mindful Materials

mindful MATERIALS (mM) is a free platform with aggregated information on human health and environmental impacts for products from leading manufacturers, vetted by experts passionate about making it easier to make informed product choices.



Manufacturing

Manufacturing Location – Huddersfield, United Kingdom

- Facility systems – ISO 14001, ISO 9001, OHSAS 18001
- 0% Waste to landfill

[View & Order Samples](#)

Oceanic

Oceanic is a fabric born of the SEAQUAL Initiative designed to combat marine plastic pollution and achieve a waste free environment. It is created entirely from post-consumer recycled plastic - from debris floating discarded in our seas, used to make SEAQUAL yarn, to bottles thrown away and destined for landfill. One small drop in the mission to clean both the earth and its ocean, this contemporary fabric is a recycled polyester with a purpose.



Indoor Advantage Gold

The SCS Indoor Advantage certification program, developed by SCS Global Services (SCS), is an air quality certificate designed for interior building materials, furnishings and textiles. The indoor Advantage Gold standard aligns with both ANSI/BIFMA M7.1 and X7.1, and CA 01350. It qualifies for many building rating systems, including LEED v4, BREEAM, WELL Building, and Living Building Challenge.



EU Ecolabel Certified

The EU Ecolabel helps you identify products and services that have a reduced environmental impact throughout their life cycle, from the extraction of raw material through to production, use and disposal. Recognised throughout Europe, the EU Ecolabel is a voluntary label promoting environmental excellence which can be trusted.



Oeko-Tex

The STANDARD 100 by OEKO-TEX® is a worldwide, independent testing and certification system for textile products. The scientific based certification process, which tests for substances which are harmful to human health, is based on rigorous test methods, test criteria and limit values, which in many cases go far beyond applicable national and international standards. Robust testing from all stages of production means that OEKO-TEX® contributes to high and effective consumer product safety.



LEED Credit Contributor

LEED v3

- MRc2.2 Sustainable purchasing - furniture over 20% post-consumer recycled content)
- MRc4 Recycled Content (100% post-consumer recycled)
- MRc5 Regional Materials (depending on distance of project location)

LEED v4

- Option 2 – Leadership extraction practices: recycled content and Low-Emitting Materials

Information on contribution to other green building schemes is available.



Mindful Materials

mindful MATERIALS (mM) is a free platform with aggregated information on human health and environmental impacts for products from leading manufacturers, vetted by experts passionate about making it easier to make informed product choices.



Manufacturing

Manufacturing Location – Huddersfield, United Kingdom

- Facility systems – ISO 14001, ISO 9001, OHSAS 18001
- 0% Waste to landfill

[View & Order Samples](#)

Quest

Created with a conscience, Quest is a continuation of our partnership with the SEAQUAL INITIATIVE to combat marine plastic pollution. Waste made wonderful, this lightly textured fabric is woven entirely from post-consumer recycled plastic - transforming it into a fabric as fluid as the waves by which it was inspired, and which it seeks to save. With a balanced hopsack weave enhanced by the discat-dyed SEAQUAL® YARN and a lightly textured surface, Quest brings a touch of ocean warmth to commercial interiors.



Indoor Advantage Gold

The SCS Indoor Advantage certification program, developed by SCS Global Services (SCS), is an air quality certificate designed for interior building materials, furnishings and textiles. The indoor Advantage Gold standard aligns with both ANSI/BIFMA M7.1 and X7.1, and CA 01350. It qualifies for many building rating systems, including LEED v4, BREEAM, WELL Building, and Living Building Challenge.



EU Ecolabel Certified

The EU Ecolabel helps you identify products and services that have a reduced environmental impact throughout their life cycle, from the extraction of raw material through to production, use and disposal. Recognised throughout Europe, the EU Ecolabel is a voluntary label promoting environmental excellence which can be trusted.



Oeko-Tex

The STANDARD 100 by OEKO-TEX® is a worldwide, independent testing and certification system for textile products. The scientific based certification process, which tests for substances which are harmful to human health, is based on rigorous test methods, test criteria and limit values, which in many cases go far beyond applicable national and international standards. Robust testing from all stages of production means that OEKO-TEX® contributes to high and effective consumer product safety.



LEED Credit Contributor

LEED v3

- MRc2.2 Sustainable purchasing - furniture over 20% post-consumer recycled content)
- MRc4 Recycled Content (100% post-consumer recycled)
- MRc5 Regional Materials (depending on distance of project location)

LEED v4

- Option 2 – Leadership extraction practices: recycled content and Low-Emitting Materials

Information on contribution to other green building schemes is available.

Mindful Materials

mindful MATERIALS (mM) is a free platform with aggregated information on human health and environmental impacts for products from leading manufacturers, vetted by experts passionate about making it easier to make informed product choices.



Manufacturing

Manufacturing Location – Huddersfield, United Kingdom

- Facility systems – ISO 14001, ISO 9001, OHSAS 18001
- 0% Waste to landfill

[View & Order Samples](#)

Rivet

Rivet is a fixating fabric which not only connects with the modern collaborative workplace, but also forms a bridge between textile traditions and future innovation. Designed to blend the aesthetic qualities of luxury woollen apparel with modern performance sportswear, Rivet is a lightly textured hopsack which emulates the swathe of suiting in a well-heeled synthetic.

Made from 100% post-consumer recycled polyester from used plastic bottles, Rivet celebrates Camira's 20 years' experience in designing and manufacturing recycled fabrics.



Indoor Advantage Gold

The SCS Indoor Advantage certification program, developed by SCS Global Services (SCS), is an air quality certificate designed for interior building materials, furnishings and textiles. The indoor Advantage Gold standard aligns with both ANSI/BIFMA M7.1 and X7.1, and CA 01350. It qualifies for many building rating systems, including LEED v4, BREEAM, WELL Building, and Living Building Challenge.



EU Ecolabel Certified

The EU Ecolabel helps you identify products and services that have a reduced environmental impact throughout their life cycle, from the extraction of raw material through to production, use and disposal. Recognised throughout Europe, the EU Ecolabel is a voluntary label promoting environmental excellence which can be trusted.



LEED Credit Contributor

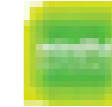
LEED v3

- MRc2.2 Sustainable purchasing - furniture (over 20% post-consumer recycled content)
- MRc4 Recycled Content (100% post-consumer recycled)
- MRc5 Regional Materials (depending on distance of project location)

LEED v4

- Option 2 – Leadership extraction practices: recycled content and Low-Emitting Materials

Information on contribution to other green building schemes is available.



Mindful Materials

mindful MATERIALS (mM) is a free platform with aggregated information on human health and environmental impacts for products from leading manufacturers, vetted by experts passionate about making it easier to make informed product choices.



Manufacturing

Manufacturing Location – Huddersfield, United Kingdom

- Facility systems – ISO 14001, ISO 9001, OHSAS 18001
- 0% Waste to landfill

[View & Order Samples](#)

Silk

Silk is a beautifully constructed dobby weave fabric created with a three tone tweed effect, rich with rustic charm. Made from a blend of three natural fibres: silk, flax and wool. This product has a fantastic eco-story, a luxuriously soft handle and is inherently flame retardant. The silk element is recycled content derived from 'noils' which are the short fibre waste remnants from the combing process before spinning. The fabric offers a colour palette of muted pastels with brighter highlights.



Indoor Advantage Gold

The SCS Indoor Advantage certification program, developed by SCS Global Services (SCS), is an air quality certificate designed for interior building materials, furnishings and textiles. The indoor Advantage Gold standard aligns with both ANSI/BIFMA M7.1 and X7.1, and CA 01350. It qualifies for many building rating systems, including LEED v4, BREEAM, WELL Building, and Living Building Challenge.



LEED Credit Contributor

LEED v3

- MRc2.2 Sustainable purchasing - furniture (over 50% rapidly renewable material)
- MRc4 Recycled Content (11% recycled silk)
- MRc5 Regional Materials (depending on distance of project location)
- MRc6 Rapidly Renewable Materials (67% wool, 22% flax, 11% silk)

LEED v4

- Building product disclosure and optimization – sourcing of raw materials: Option 2 – Leadership extraction practices: Low-Emitting Materials

Information on contribution to other green building schemes is available.



Mindful Materials

mindful MATERIALS (mM) is a free platform with aggregated information on human health and environmental impacts for products from leading manufacturers, vetted by experts passionate about making it easier to make informed product choices.



Manufacturing

Manufacturing Location – Huddersfield, United Kingdom

- Facility systems – ISO 14001, ISO 9001, OHSAS 18001
- 0% Waste to landfill

[View & Order Samples](#)

Sumi

Taking its name from monochromatic Japanese ink painting, Sumi embodies simplicity of style with a functional, minimalist approach. Respecting the authenticity of natural materials and quality craftsmanship, the fabric is made from worsted woven wool using fine marl yarns. This creates subtle gradation in colour for heightened visual interest while retaining the purity of simple, clean lines. Cosy yet contemporary, the soft feel of this fabric invites a homely vibe into contract interiors whilst ensuring a luxurious finish with its tonal sophistication and appearance of luxury apparel.

Together with Kyoto, they form a delicate pairing, understated and refined – perfect for the “less is more” world we’re emerging into.



Indoor Advantage Gold

The SCS Indoor Advantage certification program, developed by SCS Global Services (SCS), is an air quality certificate designed for interior building materials, furnishings and textiles. The indoor Advantage Gold standard aligns with both ANSI/BIFMA M7.1 and X7.1, and CA 01350. It qualifies for many building rating systems, including LEED v4, BREEAM, WELL Building, and Living Building Challenge.



EU Ecolabel Certified

The EU Ecolabel helps you identify products and services that have a reduced environmental impact throughout their life cycle, from the extraction of raw material through to production, use and disposal. Recognised throughout Europe, the EU Ecolabel is a voluntary label promoting environmental excellence which can be trusted.



LEED Credit Contributor

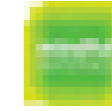
LEED v3

- MRc2.2 Sustainable purchasing - furniture (over 50% rapidly renewable material)
- MRc5 Regional Materials (depending on distance of project location)
- MRc6 Rapidly Renewable Materials (90% wool)

LEED v4

- Building product disclosure and optimization – sourcing of raw materials: Option 2 – Leadership extraction practices: Low-Emitting Materials

Information on contribution to other green building schemes is available.



Mindful Materials

mindful MATERIALS (mM) is a free platform with aggregated information on human health and environmental impacts for products from leading manufacturers, vetted by experts passionate about making it easier to make informed product choices.



Manufacturing

Manufacturing Location – Huddersfield, United Kingdom

- Facility systems – ISO 14001, ISO 9001, OHSAS 18001
- 0% Waste to landfill

[View & Order Samples](#)

Synergy

2+2 = 75. Where the total is more than the sum of the parts. Say hello to Synergy, a soft handle wool blend fabric, featuring exquisite fibre dyed shades and sumptuous piece dyed solids. It all comes together to provide our largest colour offering of 75 intelligent shades.



Indoor Advantage Gold

The SCS Indoor Advantage certification program, developed by SCS Global Services (SCS), is an air quality certificate designed for interior building materials, furnishings and textiles. The indoor Advantage Gold standard aligns with both ANSI/BIFMA M7.1 and X7.1, and CA 01350. It qualifies for many building rating systems, including LEED v4, BREEAM, WELL Building, and Living Building Challenge.



EU Ecolabel Certified

The EU Ecolabel helps you identify products and services that have a reduced environmental impact throughout their life cycle, from the extraction of raw material through to production, use and disposal. Recognised throughout Europe, the EU Ecolabel is a voluntary label promoting environmental excellence which can be trusted.



LEED Credit Contributor

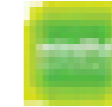
LEED v3

- MRc2.2 Sustainable purchasing - furniture (over 50% rapidly renewable material)
- MRc5 Regional Materials (depending on distance of project location)
- MRc6 Rapidly Renewable Materials (95% wool)

LEED v4

- Building product disclosure and optimization – sourcing of raw materials: Option 2 – Leadership extraction practices: Low-Emitting Materials

Information on contribution to other green building schemes is available.



Mindful Materials

mindful MATERIALS (mM) is a free platform with aggregated information on human health and environmental impacts for products from leading manufacturers, vetted by experts passionate about making it easier to make informed product choices.



Manufacturing

Manufacturing Location – Huddersfield, United Kingdom

- Facility systems – ISO 14001, ISO 9001, OHSAS 18001
- 0% Waste to landfill

[View & Order Samples](#)

Urban

Urban takes its inspiration from the street. It has a sharply styled architectural look with clean lines forming a structured geometric grid pattern reminiscent of a downtown urban cityscape. Lightly textured, there's an almost industrial metallic sheen to the freshly themed colourways which work with both Xtreme and Lucia.



Oeko-Tex

The STANDARD 100 by OEKO-TEX® is a worldwide, independent testing and certification system for textile products. The scientific based certification process, which tests for substances which are harmful to human health, is based on rigorous test methods, test criteria and limit values, which in many cases go far beyond applicable national and international standards. Robust testing from all stages of production means that OEKO-TEX® contributes to high and effective consumer product safety.



EU Ecolabel Certified

The EU Ecolabel helps you identify products and services that have a reduced environmental impact throughout their life cycle, from the extraction of raw material through to production, use and disposal. Recognised throughout Europe, the EU Ecolabel is a voluntary label promoting environmental excellence which can be trusted.



LEED Credit Contributor

LEED v3

- MRc2.2 Sustainable purchasing - furniture (over 20% post-industrial recycled content)
- MRc4 Recycled Content (100% recycled polyester)
- MRc5 Regional Materials (depending on distance of project location)

LEED v4

- Building product disclosure and optimization – sourcing of raw materials: Option 2 – Leadership extraction practices: recycled content and Low-Emitting Materials

Information on contribution to other green building schemes is available.



Manufacturing

Manufacturing Location – Huddersfield, United Kingdom

- Facility systems – ISO 14001, ISO 9001, OHSAS 18001
- 0% Waste to landfill

[View & Order Samples](#)

X2

X2 provides stretch, flammability and abrasion performance in an unobtrusive background grey mélange effect. The subtle dark tones create texture and dimension within a playful colour palette of brights through to subtle neutrals. The mottled appearance is also a practical solution to aid appearance retention.

X2 was our first 100% recycled fabric to include closed loop content. 25% of the raw material is derived from our own waste streams, specifically polyester selvages and yarn remnants.



Indoor Advantage Gold

The SCS Indoor Advantage certification program, developed by SCS Global Services (SCS), is an air quality certificate designed for interior building materials, furnishings and textiles. The indoor Advantage Gold standard aligns with both ANSI/BIFMA M7.1 and X7.1, and CA 01350. It qualifies for many building rating systems, including LEED v4, BREEAM, WELL Building, and Living Building Challenge.



Oeko-Tex

The STANDARD 100 by OEKO-TEX® is a worldwide, independent testing and certification system for textile products. The scientific based certification process, which tests for substances which are harmful to human health, is based on rigorous test methods, test criteria and limit values, which in many cases go far beyond applicable national and international standards. Robust testing from all stages of production means that OEKO-TEX® contributes to high and effective consumer product safety.



EU Ecolabel Certified

The EU Ecolabel helps you identify products and services that have a reduced environmental impact throughout their life cycle, from the extraction of raw material through to production, use and disposal. Recognised throughout Europe, the EU Ecolabel is a voluntary label promoting environmental excellence which can be trusted.



LEED Credit Contributor

LEED v3

- MRc2.2 Sustainable purchasing - furniture (over 20% post-industrial recycled content)
- MRc4 Recycled Content (100% recycled polyester)
- MRc5 Regional Materials (depending on distance of project location)

LEED v4

- Building product disclosure and optimization – sourcing of raw materials: Option 2 – Leadership extraction practices: recycled content and Low-Emitting Materials

Information on contribution to other green building schemes is available.



Mindful Materials

mindful MATERIALS (mM) is a free platform with aggregated information on human health and environmental impacts for products from leading manufacturers, vetted by experts passionate about making it easier to make informed product choices.



Manufacturing

Manufacturing Location – Huddersfield, United Kingdom

- Facility systems – ISO 14001, ISO 9001, OHSAS 18001
- 0% Waste to landfill

[View & Order Samples](#)

Xtreme

Xtreme is a modern crepe weave fabric made from 100% post-consumer recycled polyester, diverting waste from landfill and saving virgin raw materials. Its stretch properties, coupled with high flame retardancy, durability and non-pilling properties make Xtreme an ever popular fabric for task seating.



Indoor Advantage Gold

The SCS Indoor Advantage certification program, developed by SCS Global Services (SCS), is an air quality certificate designed for interior building materials, furnishings and textiles. The indoor Advantage Gold standard aligns with both ANSI/BIFMA M7.1 and X7.1, and CA 01350. It qualifies for many building rating systems, including LEED v4, BREEAM, WELL Building, and Living Building Challenge.



Oeko-Tex

The STANDARD 100 by OEKO-TEX® is a worldwide, independent testing and certification system for textile products. The scientific based certification process, which tests for substances which are harmful to human health, is based on rigorous test methods, test criteria and limit values, which in many cases go far beyond applicable national and international standards. Robust testing from all stages of production means that OEKO-TEX® contributes to high and effective consumer product safety.



EU Ecolabel Certified

The EU Ecolabel helps you identify products and services that have a reduced environmental impact throughout their life cycle, from the extraction of raw material through to production, use and disposal. Recognised throughout Europe, the EU Ecolabel is a voluntary label promoting environmental excellence which can be trusted.



LEED Credit Contributor

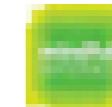
LEED v3

- MRc2.2 Sustainable purchasing - furniture (over 20% post-industrial recycled content)
- MRc4 Recycled Content (100% recycled polyester)
- MRc5 Regional Materials (depending on distance of project location)

LEED v4

- Building product disclosure and optimization – sourcing of raw materials: Option 2 – Leadership extraction practices: recycled content and Low-Emitting Materials

Information on contribution to other green building schemes is available.



Mindful Materials

mindful MATERIALS (mM) is a free platform with aggregated information on human health and environmental impacts for products from leading manufacturers, vetted by experts passionate about making it easier to make informed product choices.



Manufacturing

Manufacturing Location – Huddersfield, United Kingdom

- Facility systems – ISO 14001, ISO 9001, OHSAS 18001
- 0% Waste to landfill

[View & Order Samples](#)

Yoredale

Taking its name from the ancient title of Wensleydale in the UK, Yoredale is a fabric steeped in heritage. A highly textured textile with undulations reflective of its Yorkshire roots, its fascinating bouclé style yarn includes a contrasting black binder, creating subtle details within the weave that brings added depth to its saturated tones. Woven from British wool, Yoredale is truly timeless, blending its rich history with a contemporary appeal.



Indoor Advantage Gold

The SCS Indoor Advantage certification program, developed by SCS Global Services (SCS), is an air quality certificate designed for interior building materials, furnishings and textiles. The indoor Advantage Gold standard aligns with both ANSI/BIFMA M7.1 and X7.1, and CA 01350. It qualifies for many building rating systems, including LEED v4, BREEAM, WELL Building, and Living Building Challenge.



LEED Credit Contributor

LEED v3

- MRc2.2 Sustainable purchasing - furniture (over 50% rapidly renewable material)
- MRc6 Rapidly Renewable Materials (100% wool)

LEED v4

- Building product disclosure and optimization – sourcing of raw materials: Option 2 – Leadership extraction practices: Low-Emitting Materials

Information on contribution to other green building schemes is available.



Mindful Materials

mindful MATERIALS (mM) is a free platform with aggregated information on human health and environmental impacts for products from leading manufacturers, vetted by experts passionate about making it easier to make informed product choices.



Manufacturing

Manufacturing Location – Huddersfield, United Kingdom

- Facility systems – ISO 14001, ISO 9001, OHSAS 18001
- 0% Waste to landfill

[View & Order Samples](#)

Panel

Blazer Lite

Blazer Lite is a finer version of our Blazer upholstery fabric making it lighter in weight for use on desk screens, panels and other vertical surfaces. The felted, milled finish sports a colour palette consisting of mélange mixes, subtle pastels and iridescent brights.



Indoor Advantage Gold

The SCS Indoor Advantage certification program, developed by SCS Global Services (SCS), is an air quality certificate designed for interior building materials, furnishings and textiles. The indoor Advantage Gold standard aligns with both ANSI/BIFMA M7.1 and X7.1, and CA 01350. It qualifies for many building rating systems, including LEED v4, BREEAM, WELL Building, and Living Building Challenge.



LEED Credit Contributor

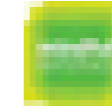
LEED v3

- MRc2.2 Sustainable purchasing - furniture (over 50% rapidly renewable material)
- MRc5 Regional Materials (depending on distance of project location)
- MRc6 Rapidly Renewable Materials (100% wool)

LEED v4

- Building product disclosure and optimization – sourcing of raw materials: Option 2 – Leadership extraction practices: Low-Emitting Materials

Information on contribution to other green building schemes is available.



Mindful Materials

mindful MATERIALS (mM) is a free platform with aggregated information on human health and environmental impacts for products from leading manufacturers, vetted by experts passionate about making it easier to make informed product choices.



Manufacturing

Manufacturing Location – Huddersfield, United Kingdom

- Facility systems – ISO 14001, ISO 9001, OHSAS 18001
- 0% Waste to landfill

[View & Order Samples](#)



Cara

Cara is a plain weave panel fabric available in a wide selection of commercial colourways. One of our most popular vertical surface fabrics, Cara is used extensively on desk screens, wallsides and on pin boards.

This fabric is largely acoustically transparent and as such is ideal to be used as a decorative facing for sound absorbing boards.



Indoor Advantage Gold

The SCS Indoor Advantage certification program, developed by SCS Global Services (SCS), is an air quality certificate designed for interior building materials, furnishings and textiles. The indoor Advantage Gold standard aligns with both ANSI/BIFMA M7.1 and X7.1, and CA 01350. It qualifies for many building rating systems, including LEED v4, BREEAM, WELL Building, and Living Building Challenge.



EU Ecolabel Certified

The EU Ecolabel helps you identify products and services that have a reduced environmental impact throughout their life cycle, from the extraction of raw material through to production, use and disposal. Recognised throughout Europe, the EU Ecolabel is a voluntary label promoting environmental excellence which can be trusted.



LEED Credit Contributor

LEED v4

- Building product disclosure and optimization – sourcing of raw materials: Option 2 – Leadership extraction practices: recycled content and Low-Emitting Materials

Information on contribution to other green building schemes is available.



Mindful Materials

mindful MATERIALS (mM) is a free platform with aggregated information on human health and environmental impacts for products from leading manufacturers, vetted by experts passionate about making it easier to make informed product choices.

[View & Order Samples](#)

Carlow

Carlow echoes the calm, gentle landscape of its Celtic namesake in rural Ireland. The fabric, like the county, invites you to escape into a place of tranquillity, discovering and exploring its hidden gems scattered throughout a vibrant textile tableau. This dobby weave panel fabric is brought to life in brave and intriguing colour mixes which can be teamed with our most popular upholstery fabrics as well as its panel partner Cara. Carlow is acoustically transparent, making it ideal as a decorative facing for sound absorbing boards.



Indoor Advantage Gold

The SCS Indoor Advantage certification program, developed by SCS Global Services (SCS), is an air quality certificate designed for interior building materials, furnishings and textiles. The indoor Advantage Gold standard aligns with both ANSI/BIFMA M7.1 and X7.1, and CA 01350. It qualifies for many building rating systems, including LEED v4, BREEAM, WELL Building, and Living Building Challenge.



LEED Credit Contributor

LEED v4

- Building product disclosure and optimization – sourcing of raw materials: Option 2 – Leadership extraction practices: Low-Emitting Materials

Information on contribution to other green building schemes is available.



Mindful Materials

mindful MATERIALS (mM) is a free platform with aggregated information on human health and environmental impacts for products from leading manufacturers, vetted by experts passionate about making it easier to make informed product choices.

[View & Order Samples](#)

Era 170

Era 170 is a subtle, two tone polyester fabric containing stretch in both directions for use on panels, pods and soft seating. The baby herringbone weave offers an understated contemporary texture while its colouring technique provides close up intrigue. The palette incorporates playful brights and sophisticated muted tones.



Indoor Advantage Gold

The SCS Indoor Advantage certification program, developed by SCS Global Services (SCS), is an air quality certificate designed for interior building materials, furnishings and textiles. The indoor Advantage Gold standard aligns with both ANSI/BIFMA M7.1 and X7.1, and CA 01350. It qualifies for many building rating systems, including LEED v4, BREEAM, WELL Building, and Living Building Challenge.



Oeko-Tex

The STANDARD 100 by OEKO-TEX® is a worldwide, independent testing and certification system for textile products. The scientific based certification process, which tests for substances which are harmful to human health, is based on rigorous test methods, test criteria and limit values, which in many cases go far beyond applicable national and international standards. Robust testing from all stages of production means that OEKO-TEX® contributes to high and effective consumer product safety.



LEED Credit Contributor

LEED v4

- Building product disclosure and optimization – sourcing of raw materials: Option 2 – Leadership extraction practices: Low-Emitting Materials

Information on contribution to other green building schemes is available.



Mindful Materials

mindful MATERIALS (mM) is a free platform with aggregated information on human health and environmental impacts for products from leading manufacturers, vetted by experts passionate about making it easier to make informed product choices.



Manufacturing

Manufacturing Location – Huddersfield, United Kingdom

- Facility systems – ISO 14001, ISO 9001, OHSAS 18001
- 0% Waste to landfill

[View & Order Samples](#)

Lucia

Lucia is an ever popular crêpe weave synthetic panel fabric. It's manufactured from 100% recycled polyester saving virgin raw materials and giving a reduced environmental footprint. With a non-lustrous appearance, its bold and bright colour palette is designed to complement the Xtreme range for upholstery. This fabric is largely acoustically transparent and as such is ideal to be used as a decorative facing for sound-absorbing boards.



Indoor Advantage Gold

The SCS Indoor Advantage certification program, developed by SCS Global Services (SCS), is an air quality certificate designed for interior building materials, furnishings and textiles. The indoor Advantage Gold standard aligns with both ANSI/BIFMA M7.1 and X7.1, and CA 01350. It qualifies for many building rating systems, including LEED v4, BREEAM, WELL Building, and Living Building Challenge.



Oeko-Tex

The STANDARD 100 by OEKO-TEX® is a worldwide, independent testing and certification system for textile products. The scientific based certification process, which tests for substances which are harmful to human health, is based on rigorous test methods, test criteria and limit values, which in many cases go far beyond applicable national and international standards. Robust testing from all stages of production means that OEKO-TEX® contributes to high and effective consumer product safety.



EU Ecolabel Certified

The EU Ecolabel helps you identify products and services that have a reduced environmental impact throughout their life cycle, from the extraction of raw material through to production, use and disposal. Recognised throughout Europe, the EU Ecolabel is a voluntary label promoting environmental excellence which can be trusted.



LEED Credit Contributor

LEED v3

- MRc2.2 Sustainable purchasing - furniture (over 20% post-industrial recycled content)
- MRc4 Recycled Content (100% recycled polyester)
- MRc5 Regional Materials (depending on distance of project location)

LEED v4

- Building product disclosure and optimization – sourcing of raw materials: Option 2 – Leadership extraction practices: recycled content and Low-Emitting Materials

Information on contribution to other green building schemes is available.



Mindful Materials

mindful MATERIALS (mM) is a free platform with aggregated information on human health and environmental impacts for products from leading manufacturers, vetted by experts passionate about making it easier to make informed product choices.



Manufacturing

Manufacturing Location – Huddersfield, United Kingdom

- Facility systems – ISO 14001, ISO 9001, OHSAS 18001
- 0% Waste to landfill

[View & Order Samples](#)

Synergy 170

Synergy 170 is the panel partner to our popular wool rich upholstery fabric Synergy. With a palette of 24 carefully considered shades taken from our Synergy colour offering, this addition coordinates with our family of fabrics in the Synergy Collection and offers further solutions for interior fabric schemes.



Indoor Advantage Gold

The SCS Indoor Advantage certification program, developed by SCS Global Services (SCS), is an air quality certificate designed for interior building materials, furnishings and textiles. The indoor Advantage Gold standard aligns with both ANSI/BIFMA M7.1 and X7.1, and CA 01350. It qualifies for many building rating systems, including LEED v4, BREEAM, WELL Building, and Living Building Challenge.



EU Ecolabel Certified

The EU Ecolabel helps you identify products and services that have a reduced environmental impact throughout their life cycle, from the extraction of raw material through to production, use and disposal. Recognised throughout Europe, the EU Ecolabel is a voluntary label promoting environmental excellence which can be trusted.



LEED Credit Contributor

LEED v3

- MRc2.2 Sustainable purchasing - furniture (over 50% rapidly renewable material)
- MRc5 Regional Materials (depending on distance of project location)
- MRc6 Rapidly Renewable Materials (95% wool)

LEED v4

- Building product disclosure and optimization – sourcing of raw materials: Option 2 – Leadership extraction practices: Low-Emitting Materials

Information on contribution to other green building schemes is available.



Mindful Materials

mindful MATERIALS (mM) is a free platform with aggregated information on human health and environmental impacts for products from leading manufacturers, vetted by experts passionate about making it easier to make informed product choices.



Manufacturing

Manufacturing Location – Huddersfield, United Kingdom

- Facility systems – ISO 14001, ISO 9001, OHSAS 18001
- 0% Waste to landfill

[View & Order Samples](#)

